

# *Frosty Meadow*

• 2022 NCDACS Permit to Sell Bees in North Carolina #22 - 036

## **Established Nucleus Colonies for Spring 2022 Pick-up**



Locally produced in Chatham County NC

- Locally bred marked queens
- Overwintered established colony
- Frosty Meadow's Apiary has passed Inspection by North Carolina Department of Agriculture and Consumer Services



Young, healthy, proven queens

### **Each 5 frame colony has**

- Marked queen with 3 frames of her brood and nurse bees
- 2 frames of bees with honey, pollen and drawn comb

### **Available late March-late April**

- \$225 per colony
- Medium frame colonies available upon request
- Availability date to be determined by weather



5 frame nucleus colony in secure Pro Nuc carrier



Kory with a nice frame of brood

**Call, Text or Email Kory**

**919 • 619 • 7713**

**kory@frostymeadow.com**

# Bee Math

$$16 + 3 = ??$$

## Biological Event

## Days for Event to Occur

1  
2  
3 Worker Egg to Queen Emergence

6 16

Worker Egg to Worker Emergence

21

Worker Egg to Drone Emergence

24

Worker Egg to Queen Mating

28 (16 days for queen, 12 days for mating)

Worker Egg to First new Brood

31 (16 days for queen, 12 for Mating, 3 for egg development)

Worker Egg to Emergence of a new queen's brood

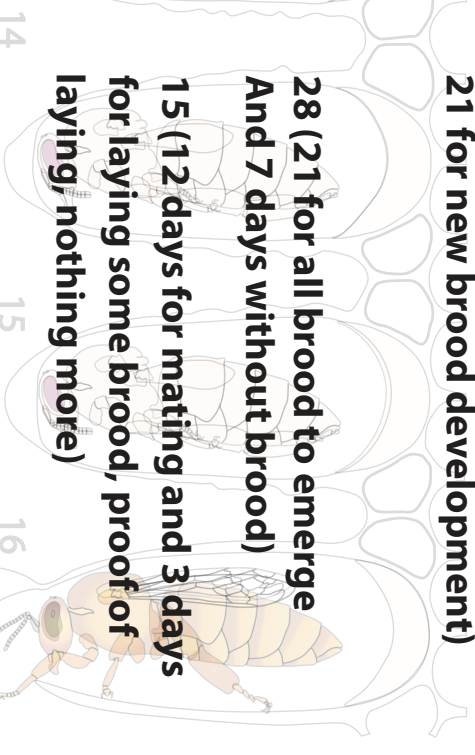
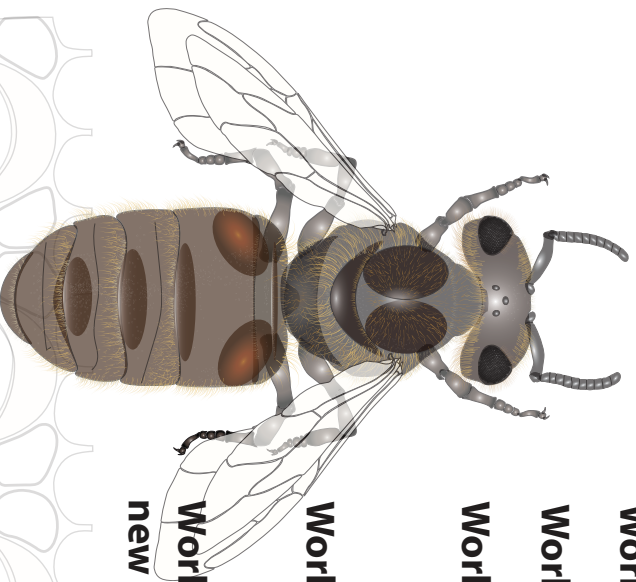
52 (16 days for queen, 12 Mating, 3 for egg development and 21 for new brood development)

Development of Drone Layers

28 (21 for all brood to emerge And 7 days without brood)

Minimum days for a ripe queen cell to be left in a hive, the queen emerge, mate, and lay

15 (12 days for mating and 3 days for laying some brood, proof of laying, nothing more)



9

10

11

12

13

14

15

16